

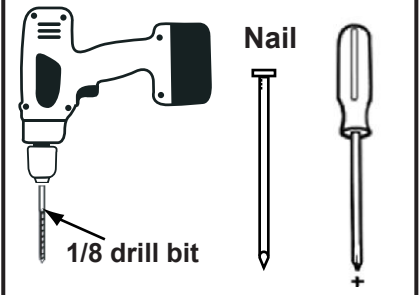
INSTALLATION GUIDE D1



WARNING

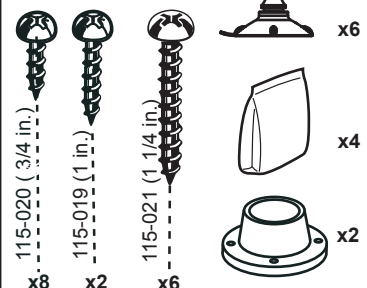
- ▶ Do not dive or jump from step or ladder.
- ▶ Use BATTERY operated tools to avoid electric shocks.
- ▶ Install the pool step on a flat surface.
- ▶ Remove step from pool during freezing climate season.
- ▶ Manufacturer cannot be held responsible for injuries caused by abusive use of product.
- ▶ Ask your city about specific regulations that apply to your above ground pool and ladder.

Tools required (not included)



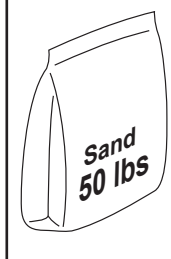
Contents hardware bag

SCREW KIT 50-0027U



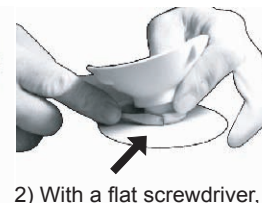
Sand

(not included)

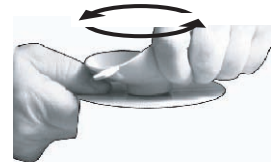


STEP CUPS INSTALLATION

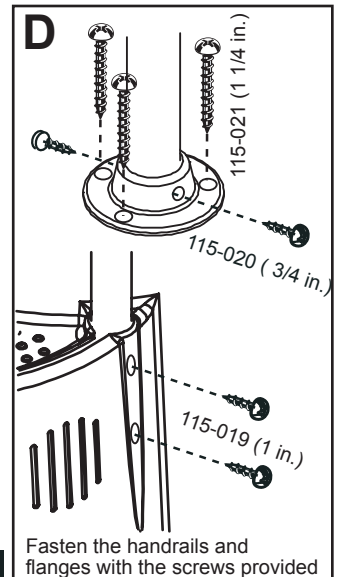
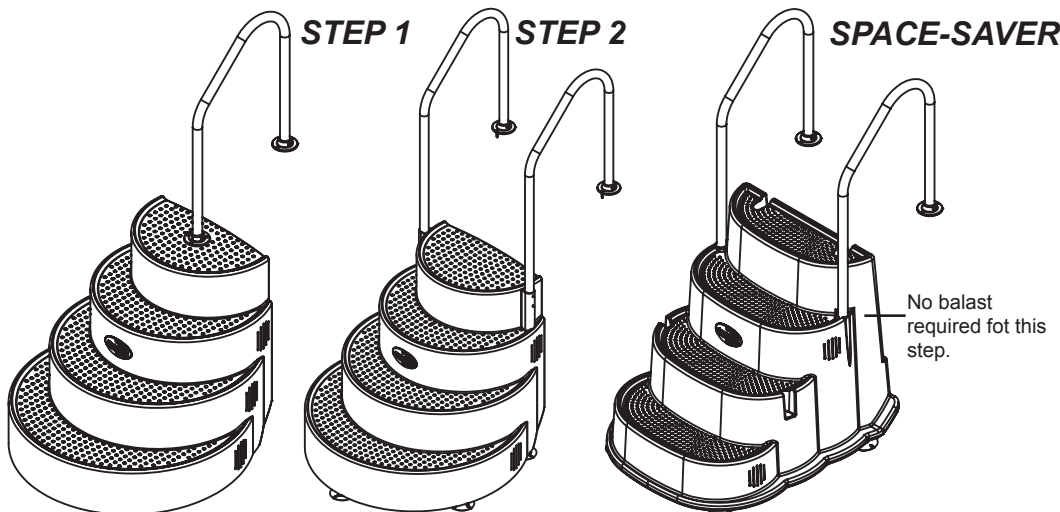
1) Insert half of the Step Cup™ mushroom in the hole, at a 45 degree angle.



2) With a flat screwdriver, compress the Step Cup™ mushroom ring while pushing it into the hole.

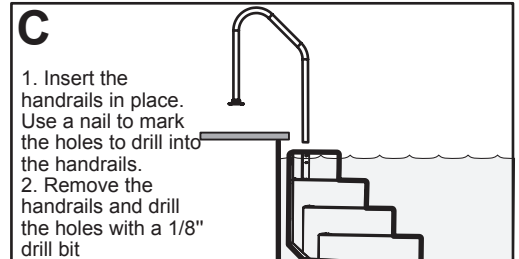
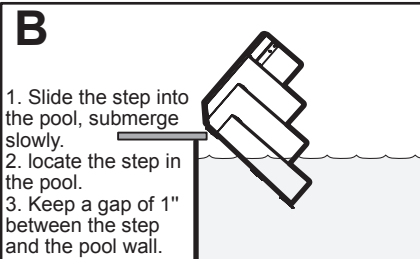
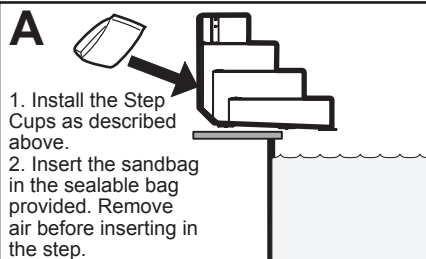


3) Twist the Step Cup™ to ensure that its mushroom has entirely cleared the wall thickness. If it has, the suction cup should rotate freely.



Fasten the handrails and flanges with the screws provided

STEP INSTALLATION



ACCESS

250, Boul. Industriel
St- Germain de Grantham
QC, J0C 1K0

WWW.INNOVAPLAS.COM



MANUFACTURER WARRANTY

**1 year on the pool step.
1 year on the hardware.**

REV. 01/04/2010

PN: ACC-ABG

PG:1