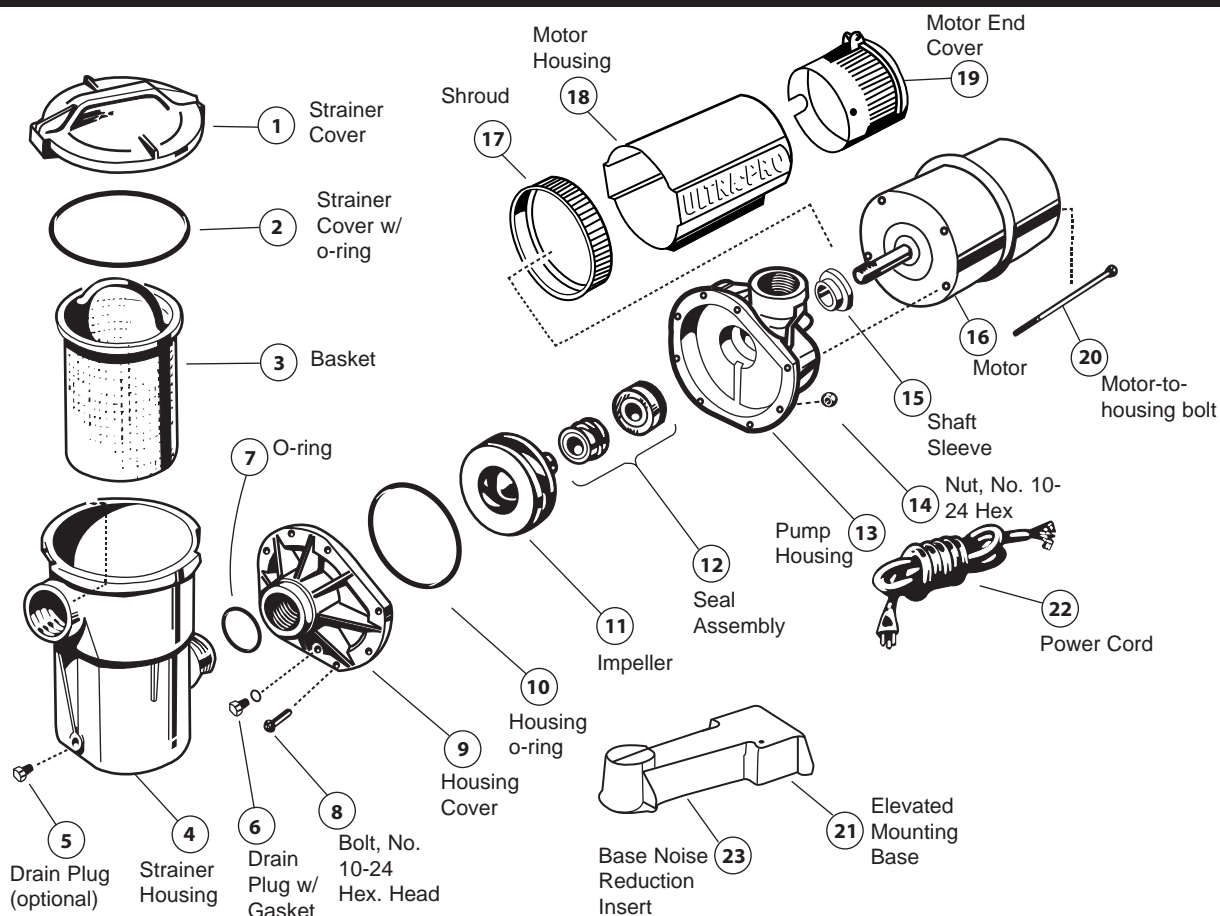




# Ultra Pro

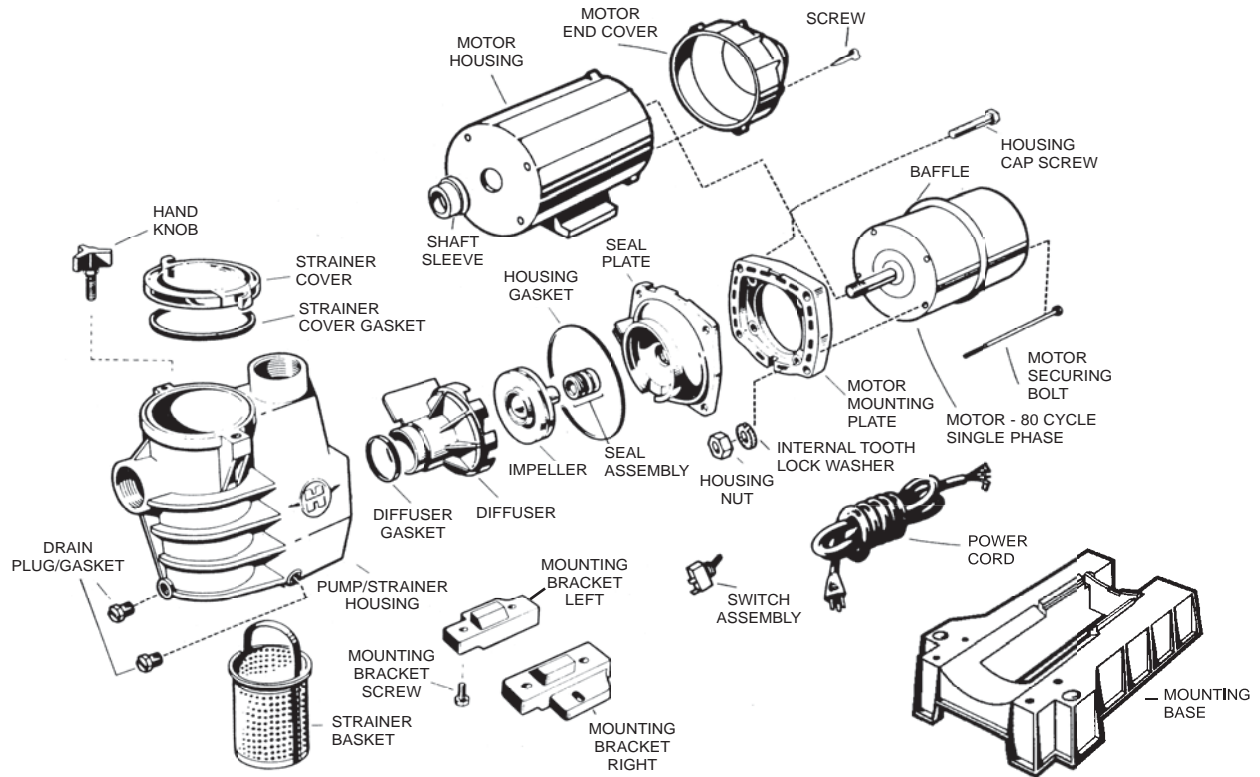
## SP2290 AND SP2295 PUMP SERIES REPLACEMENT PARTS

Parts for Pump Models: SP2290, SP2295, SP2290ET, SP2295ET



Part No.	Description	Ctn. Qty.
SPX1500D2A	Strainer Cover	1
SPX1500P	Strainer O-Ring	1
SPX1500LX	Basket	1
SPX1500CAP	Strainer Housing	1
SPX1700FG	Drain Plug (optional)	—
SPX1700FG	Drain Plug w/Gasket	1
SPX1500W	O-Ring	1
SPX1500N2	Bolt, No. 10-24 Hex. Head	8
SPX1580BP	Housing Cover	1
SPX1580Z1	Housing O-ring	1
SPX1500E	Impeller	1
SPX1500KA	Seal Assembly - (2005 SPX1250XZ2C)	1
SPX1580AAP	Pump Housing	1
SPX1500Y2	Nut, No. 10-24 Hex.	8
SPX1500Q4	Shaft Sleeve	1
SPX1509Z1	Motor	1
SPX2090B	Shroud	1
SPX2090A	Motor Housing	1
	Motor-To-Housing Bolt <b>To order, specify manufacturer, HP and Model No.</b>	4
SPX2601C	Elevated Mounting Base (optional)	—
SPX2090C	Motor End Cover (optional)	—
ECX1325R	Switch Assembly (optional)	—
ECX13252R	Switch Assembly - 2speed	—
SPX2090CET	Motor End Cover (electronic timer)	—
SPX1514Z1UF	1.5HP Motor	1
SPX2090C2	End Bell 2 Speed Kit	1
SPX1515C	C-Clip	1

### Parts for Pump Models: SP2910, SP2915, SP2910ET, SP2915ET



Part No.	Description	Ctn. Qty.
SPX1250LA	Strainer Cover	10
SPX0125T	Strainer Cover Gasket	10
SPX1250Z4	Hand Knob	10
SPX1700FG	Drain Plug/Gasket	10
SPX2800AA	Pump/Strainer Housing	1
SPX1600R	Diffuser Gasket	25
SPX2800B	Diffuser	1
SPX2915CT	Impeller	10
SPX1600Z2	Seal Assembly	10
SPX1600T	Housing Gasket	10
SPX2600E	Seal Plate	1
SPX1600F3M	Motor Mounting Plate	1
SPX2800M	Strainer Basket	10
SPX1600Z4	Housing Cap Screw	10
SPX2000A3	Motor Housing	10
SPX1500Q4	Shaft Sleeve	10
SPX1510N9	Housing Nut	10
SPX3300Z1	Internal Tooth Lock Washer	25
SPX2000E	Baffle	1
SPX1600Z5	Mounting Bracket Screw	25
SPX2600G1	Mounting Bracket Left (prior to 2000)	1
SPX2600G1	Mounting Bracket Right (prior to 2000)	1
ECX1325R	Switch Assembly	5
ECX13252R	Switch Assembly - 2speed	
SPX1550WA6C	Power Cord	5
SPX1510N7	Motor Securing Bolt	25
SPX2000C2	Motor End Cover	1
SPX1411Z3	Screw	25
SPX2601B	Base Pins (Pack of 2)	2