

STONEWOOD

BATH CABINETS



QUALITY • STYLE • CRAFTSMANSHIP • VALUE

OUR GOAL

Stonewood Bath Cabinetry's goal is to provide the highest quality bathroom cabinetry, stone tops and accessories to our customers. We continue to be an industry leader, always learning and improving to serve you better. Delivering exceptional service and value to our customers are our top priorities.

Our program allows customers to mix and match their products, styles and colours, giving them the bathroom vanity of their dreams.

QUICK TURNAROUND

Once your order has been placed, expect to receive your custom vanity in two - three weeks. (Allow five weeks for Five Shades of Grey Premium Painted Collection.)

HUNDREDS OF COLOUR COMBINATIONS

Find the perfect match to suit your style!

PROUDLY CANADIAN

Our production facility is located in Barrie, Ontario. Assembly and quality inspections take place here.

ON THE COVER:

Vanity: 60" Double Bowl Driftwood (*Bellrose*)

Vanity top: Luna Quartz

Hardware: Bar - Black

Mirrors: 19%" Driftwood

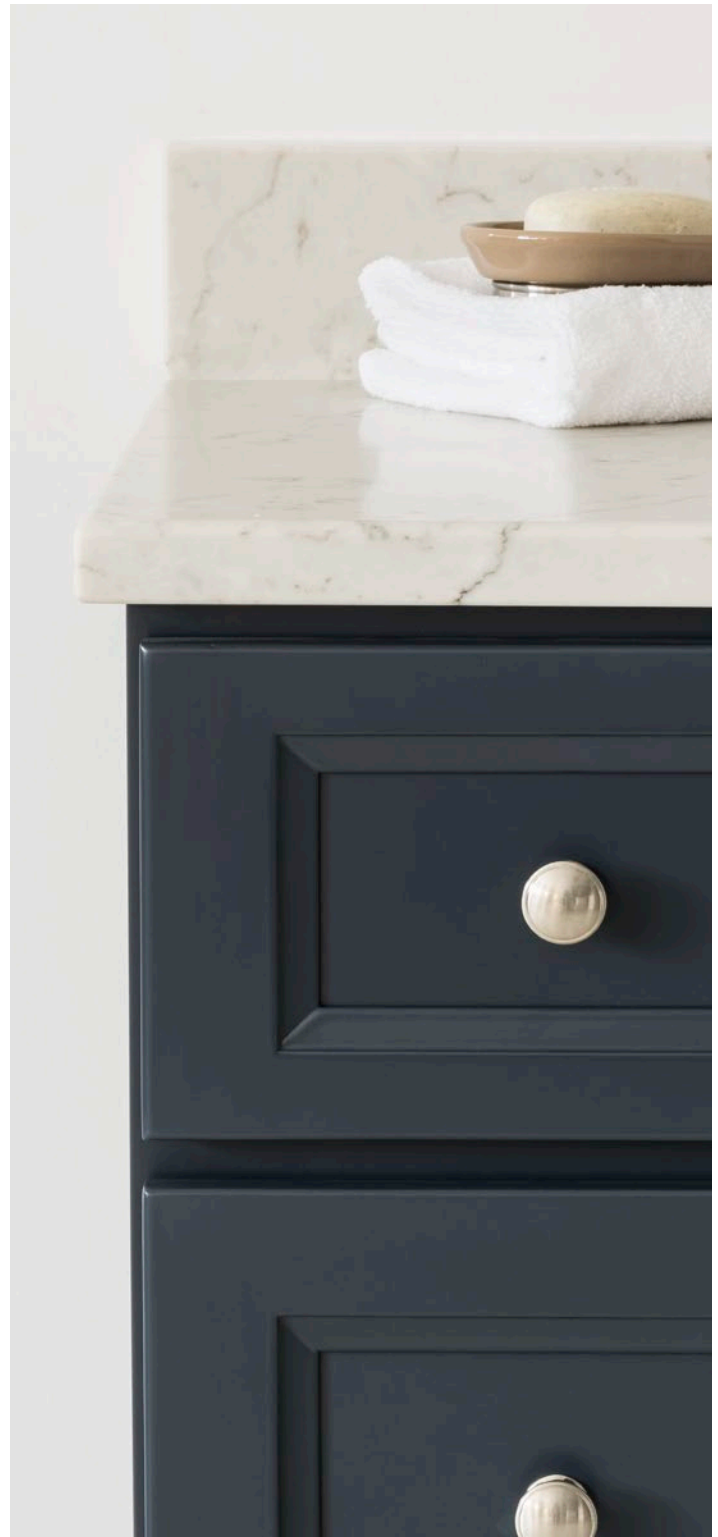


TABLE OF CONTENTS

3 Superior Quality	12 Stained Classic Collection	24 Dimensions
4 Door Finishes & Styles	14 Linen Tower Integration	26 Project Planning & Installation Tips
6 Wire Brushed Oak Premium Collection	16 Hardware	27 Layout Options
8 Five Shades of Grey Premium Painted Collection	18 Stone Vanity Tops	28 Easy Ordering
10 Painted Classic Collection	20 Undermount Sinks	
	21 54" Vanity	
	22 Accessories	

SUPERIOR QUALITY

Stonewood Bath Cabinetry uses solid hardwood face frame and back frame construction. Dovetail drawers ensure superior construction integrity. Our engineered Quartz and natural Granite stone tops lead the industry in selection and quality.



Quality components and exceptional craftsmanship make us number one in the industry. We offer warranties on all of our vanities, stone tops, drawer slides and hinges. More information can be found at stonewoodbath.com/warranty.



PREMIUM FEATURES

- **Solid hardwood furniture kick and secondary “dust” kick** – no dust bunnies and plenty of space for your toes
- **Hardwood dovetail drawer box** – strongest of all wood joints
- **Inserted bumpers** – guaranteed to not fall off
- **5/8" plywood side panels and floor** for resistance against moisture and added durability
- **Solid hardwood face frame and back frame** – stronger than frameless cabinetry
- **Super duty, soft-closing hardware** with lifetime warranty
- **Open back** for easy installation and plumbing access
- **Fully adjustable hardware** for levelling drawer fronts and 3/8" plywood drawer bottom
- **Full extension drawers** – for complete access
- **6-way adjustable soft-closing hinges** – safe and quiet



DOOR FINISHES & STYLES

WIRE BRUSHED OAK PREMIUM COLLECTION



DESERT OAK (Bellrose)



URBAN OAK (Bellrose)



WEATHERED OAK (Bellrose)

FIVE SHADES OF GREY PREMIUM PAINTED COLLECTION



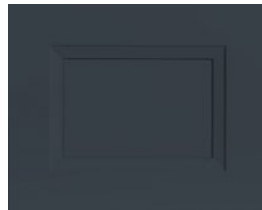
GRAPHITE (Bellrose)



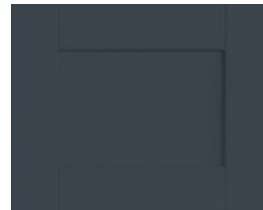
GRAPHITE (V-Groove Shaker)



GRAPHITE (Raised Panel)



NAVY GREY (Bellrose)



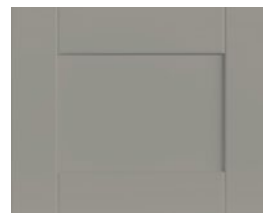
NAVY GREY (V-Groove Shaker)



NAVY GREY (Raised Panel)



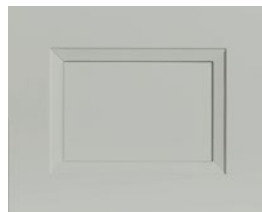
SILVER (Bellrose)



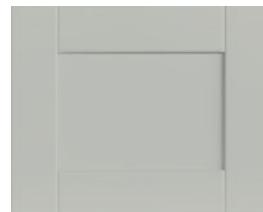
SILVER (V-Groove Shaker)



SILVER (Raised Panel)



SMOKE (Bellrose)



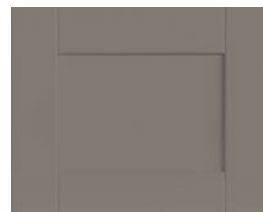
SMOKE (V-Groove Shaker)



SMOKE (Raised Panel)



TITANIUM (Bellrose)



TITANIUM (V-Groove Shaker)



TITANIUM (Raised Panel)

Five-piece door styles explained:

BELLROSE

Recessed centre panel with a soft, linear profile.

SHAKER

A flat centre panel and square edges. Minimal detailing and profile.

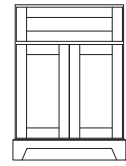
V-GROOVE SHAKER

Shaker-style with an added groove at the joints.

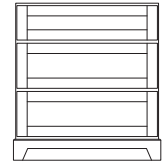
RAISED PANEL

Slightly decorative with a raised centre panel.

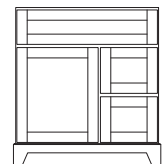
AVAILABLE VANITY WIDTHS



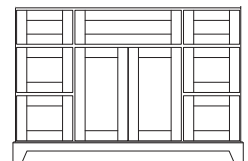
24" VANITY



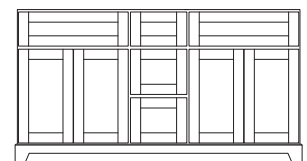
30"/36" VANITY†
(DRESSER STYLE)



30"/36" VANITY
(LEFT OR RIGHT
DRAWER)



42"/48"/54"/60" VANITY*
(SINGLE BOWL)



60"/72" VANITY
(DOUBLE BOWL)

†30"/36" Dresser Style vanities are available in all finishes except Chestnut (Raised Panel/Shaker) and Espresso.

*The 54" vanity is exclusive to the following Bellrose door style finishes: White, Five Shades of Grey, Lakewood and Driftwood.

PAINTED CLASSIC COLLECTION



WHITE (Bellrose)



WHITE (V-Groove Shaker)



BISCOTTI (Raised Panel)

STAINED CLASSIC COLLECTION



DRIFTWOOD (Bellrose)



CHESTNUT (Shaker)



CHESTNUT (Raised Panel)



LAKWOOD (Bellrose)



ESPRESSO (Shaker)

WIRE BRUSHED OAK

PREMIUM COLLECTION

Our Wire Brushed Oak Premium Collection is stunning! We enhance the original wood grain of oak by wire brushing the surface to expose its natural characteristics and beauty. Multiple coats of stain and glaze further enhance the natural deep oak grain. The final product is a premium wood finish that will complement any décor.

Available door finish and style combinations:



DESERT OAK (Bellrose)
Light, rustic and earthy. Desert Oak has compelling wood grains which offer a natural, organic aesthetic.



URBAN OAK (Bellrose)
Dark and rich. Urban Oak provides dark wood grains with an elegant finish.



WEATHERED OAK (Bellrose)
Rustic and warm. Weathered Oak offers a similar feel to raw wood and complements traditional décor.

Finishing process:

1. We start by selecting furniture grade, kiln dried oak.
2. Components are wire brushed to bring out wood grain and texture.
3. Multiple coats of stain and glaze are carefully applied by hand.
4. Sanding between each coat is a critical step in our finishing process.
5. Two coats of premium quality furniture varnish are applied, making our products scratch-, scuff-, moisture- and stain-resistant.
6. To complete the finishing process, a rigorous final inspection takes place, ensuring that each finished part meets our highest quality standards.

NOTE: Due to wood's natural uniqueness and because each Stonewood product is finished by hand, there may be diversity in colour, tone and grain pattern. The differences will vary from these pictures, in-store display samples and from product to product.



NEW VANITY TOP





Urban Oak (Bellrose)

1. 24" **VANITY** Shown in Weathered Oak (Bellrose) with One-Piece Porcelain Top with integrated sink and Brushed Nickel Modern knobs.
2. 30"/36" **RIGHT OR LEFT DRAWER VANITY** Shown in 36" Urban Oak (Bellrose) right drawer with Carrera Quartz top and Chrome Slim handles.
3. 30"/36" **DRESSER STYLE VANITY** Shown in 36" Desert Oak (Bellrose) with Pewter Quartz top and Black Long Curved handles.
4. 42"/48"/60" **SINGLE BOWL VANITY** Shown in 48" Desert Oak (Bellrose) with Fantasy Quartz top and Brushed Nickel Bar handles.
5. 60"/72" **DOUBLE BOWL VANITY** Shown in 72" Urban Oak (Bellrose) with Dover White Quartz top, Brushed Nickel Bevelled handles and two 26" Urban Oak mirrors.

All finishes are available in every vanity size except 54".

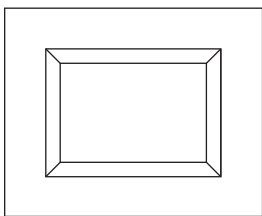
FIVE SHADES OF GREY

PREMIUM PAINTED COLLECTION

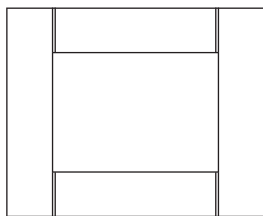
Allow up to five weeks for delivery of Five Shades of Grey Premium Painted Collection vanities.

Add the WOW factor to your bathroom by having your vanity professionally painted in one of our trendsetting greys!

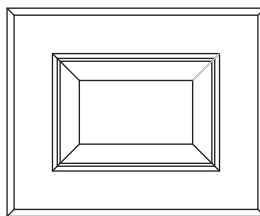
Available five-piece door styles:



BELLROSE
Recessed centre panel with a soft, linear profile.



V-GROOVE SHAKER
Shaker-style with an added groove at the joints.



RAISED PANEL
A modern raised panel door style with the centre panel slightly raised.

Available colours:



GRAPHITE
Similar to Beauti-Tone Warehouse District F045-4 and Benjamin Moore Overcoat CC-544



NAVY GREY
Similar to Beauti-Tone Rooftop at Midnight F034-3 and Benjamin Moore Hale Navy HC-154



SILVER
Similar to Beauti-Tone Class Act D40-4-1592-4 and Benjamin Moore Vintage Pewter CSP-110



SMOKE
Similar to Beauti-Tone Roller Skates ST016 and Benjamin Moore Metropolitan AF-690



TITANIUM
Similar to Beauti-Tone Mink About It RI63-4 and Benjamin Moore Metropolitan CC-546





Graphite (V-Groove Shaker) with Carrera Top



1. 24" VANITY Shown in Smoke (V-Groove Shaker) with One-Piece Porcelain Top with integrated sink and Brushed Nickel Modern knobs.
2. 30"/36" RIGHT OR LEFT DRAWER VANITY Shown in 36" Silver (Bellrose) left drawer with Pewter Quartz top and Black Curved handles.
3. 30"/36" DRESSER STYLE VANITY Shown in 30" Titanium (Raised Panel) with Dover White Quartz top and Brushed Nickel Long Curved handles.
4. 42"/48"/54"/60" SINGLE BOWL VANITY Shown in 48" Navy Grey (Bellrose) with Fantasy Quartz top and Brushed Nickel Modern knobs.
5. 60"/72" DOUBLE BOWL VANITY Shown in 72" Graphite (V-Groove Shaker) with Carrera Quartz top, Chrome Bar handles and two 26" Graphite mirrors.

All colours are available in every door style and vanity size except the 54" vanity which is exclusive to the Bellrose door style.

NOTE: Each Stonewood product is finished by hand. There may be diversity in colour and tone. The differences will vary from these pictures, in-store display samples and from product to product.

PAINTED

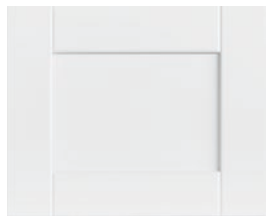
CLASSIC COLLECTION

For a clean look, our Painted Classic Collection offers three door styles in two finish options; White or Biscotti. Our professional painters take care in ensuring your vanity has a smooth, uniform finish, by applying multiple coats of paint and sanding between each coat. This technique results in a beautiful, satin-like finish; a standout piece in any bathroom.

Available door finish and style combinations:



WHITE (Bellrose)
Our five-piece Bellrose style door painted in a clean, crisp white. Similar to *Beauti-Tone Here Comes The Bride WB001-0* and *Benjamin Moore Chantilly Lace OC-65*.



WHITE (V-Groove Shaker)
Our five-piece shaker-style door with an added groove at the joints. Painted in a clean, crisp white. Similar to *Beauti-Tone Here Comes The Bride WB001-0* and *Benjamin Moore Chantilly Lace OC-65*.

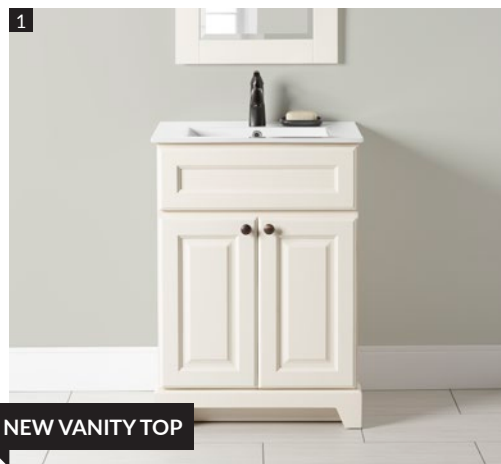


BISCOTTI (Raised Panel)
A modern raised panel door style with the centre panel slightly raised. Painted in a soft off-white. Similar to *Beauti-Tone Summer Whites WB034-0* and *Benjamin Moore Acadia White OC-38*.

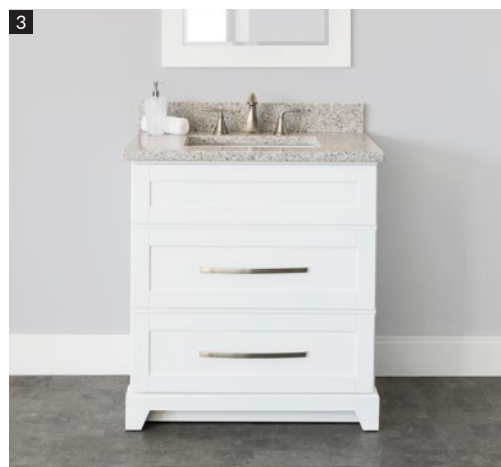
Finishing process:

1. We start by selecting furniture grade, kiln dried hardwood.
2. Door and drawer centre panels are made of High Density Fiberboard (HDF) to minimize expansion and contraction.
3. Each wood component is sanded to a smooth and even surface.
4. After sanding, the doors are sent to be dusted and inspected.
5. The doors are then primed, painted and sanded.
6. The painting and sanding process is repeated until a uniform finish is reached.
7. A heavily pigmented lacquer is applied as a final coat.
8. To complete the finishing process, a rigorous final inspection takes place, ensuring that each finished part meets our highest quality standards.

NOTE: Each Stonewood product is finished by hand. There may be diversity in colour and tone. The differences will vary from these pictures, in-store display samples and from product to product.



NEW VANITY TOP





White (V-Groove Shaker) with Fuzion Quartz top



1. 24" VANITY Shown in Biscotti (Raised Panel) with One-Piece Porcelain Top with integrated sink and Oil Rubbed Bronze Modern knobs
2. 30"/36" RIGHT OR LEFT DRAWER VANITY Shown in 36" White (Bellrose) right drawer with Pewter Quartz top and Chrome Curved handles
3. 30"/36" DRESSER STYLE VANITY Shown in 30" White (V-Groove Shaker) with Fuzion Quartz top and Brushed Nickel Long Curved handles.
4. 42"/48"/54"/60" SINGLE BOWL VANITY Shown in 48" White (Bellrose) with Fantasy Quartz top and Brushed Nickel Bevelled handles
5. 60"/72" DOUBLE BOWL VANITY Shown in 72" Biscotti (Raised Panel) with Frosty Grey Quartz top, Brushed Nickel Modern knobs and two 26" Biscotti mirrors.

All finishes are available in every vanity size except the 54" vanity which is only available in White (Bellrose).

STAINED

CLASSIC COLLECTION

Our Stained Classic Collection features an assortment of popular wood stains and glazes, offered in a variety of door styles. Multiple coats of stain and glaze are applied by hand to achieve a deep, rich finish.

Available door finish and style combinations:



NEW!

DRIFTWOOD (*Bellrose*)
Light and neutral. Driftwood is the perfect canvas to build upon, allowing you to pair it with almost any colour.



CHESTNUT (*Shaker*)
Chestnut brings an elegant, traditional look to your bathroom space. Seen here in Shaker door style, it has a slightly modern feel.



CHESTNUT (*Raised Panel*)
A time-honoured classic in a vintage raised panel look. A five-piece mitred door with multiple stepped edges.



LAKEWOOD (*Bellrose*)
Modern, charming and satiny. Lakewood offers hints of black, green and dark grey. A chic and sophisticated centrepiece to your bathroom.

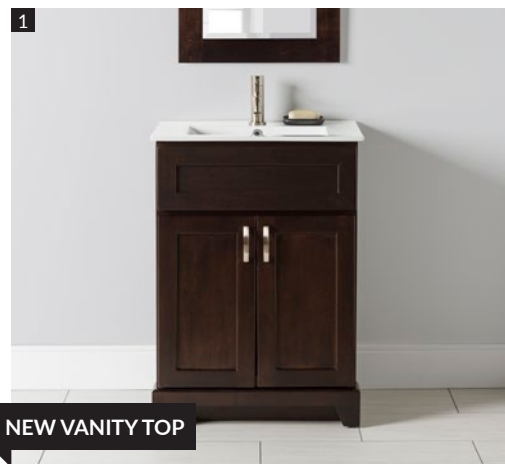


ESPRESSO (*Shaker*)
Deep, rich, dark brown. Espresso lends itself to warm, cozy and slightly modern designs. A tasteful, smart look to any bathroom.

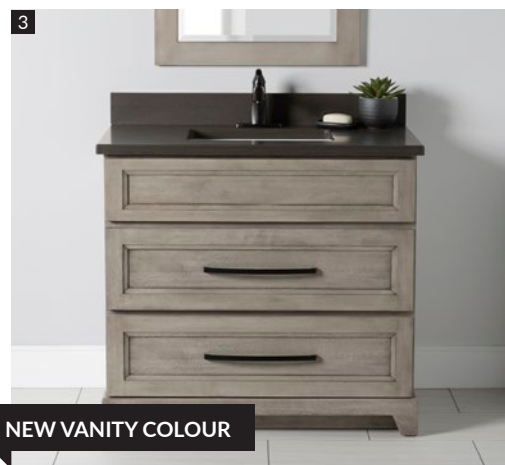
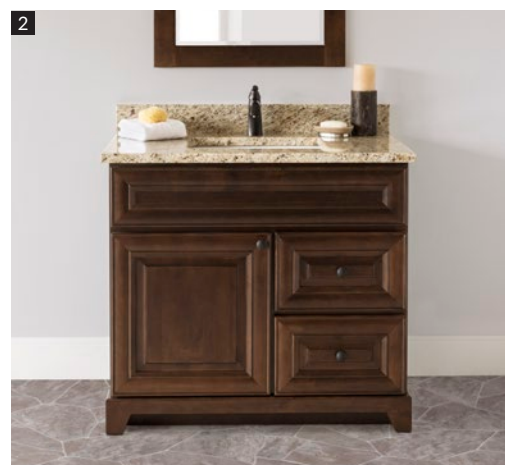
Finishing process:

1. We start by selecting furniture grade, kiln dried hardwood.
2. Multiple coats of stain and glaze are carefully applied by hand.
3. Sanding between each coat is a critical step in our finishing process.
4. Two coats of premium quality furniture varnish are applied, making our products scratch-, scuff-, moisture- and stain-resistant.
5. To complete the finishing process, a rigorous final inspection takes place, ensuring that each finished part meets our highest quality standards.

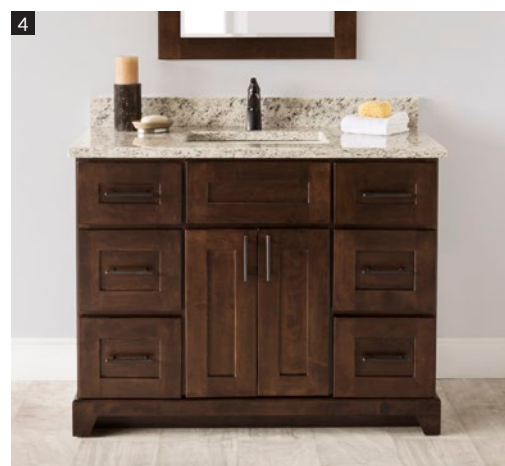
NOTE: Due to wood's natural uniqueness, and because each Stonewood product is finished by hand, there may be diversity in colour, tone and grain pattern. The differences will vary from these pictures, in-store display samples and from product to product.



NEW VANITY TOP



NEW VANITY COLOUR





Chestnut (*Shaker*) with
White Rose Granite top

1. 24" VANITY Shown in Espresso (*Shaker*) with One-Piece Porcelain Top with integrated sink and Brushed Nickel Curved handles.
2. 30"/36" RIGHT OR LEFT DRAWER VANITY Shown in 36" Chestnut (*Raised Panel*) right drawer with Giallo Granite top and Black Modern knobs.
3. 30"/36" DRESSER STYLE VANITY Shown in 36" Driftwood (*Bellrose*) with Pewter Quartz top and Black Long Curved handles.
4. 42"/48"/54"/60" SINGLE BOWL VANITY Shown in 42" Chestnut (*Shaker*) with White Rose Granite top and Oil Rubbed Bronze Bar handles.
5. 60"/72" DOUBLE BOWL VANITY Shown in 72" Lakewood (*Bellrose*) with Fantasy Quartz top, Brushed Nickel Bevelled handles and two 26" Lakewood mirrors.

All finishes are available in every vanity size except for the Dresser Style and 54" vanity which are only available in Driftwood and Lakewood.

LINEN TOWER

INTEGRATION

Linen towers have a matching finished interior. The standard option comes with open upper shelves (see pg. 26) or a door with left or right hinges that can be added at no additional charge (shown right).

Custom Integration for a perfect fit

Linen towers can be installed three unique ways: free standing, tight against a wall or for a perfect finish, you can also integrate the linen tower(s) with your vanity. No matter what your preference, our linen tower will complete the look of your bathroom.

The linen tower can be installed free standing (as it is finished on all three sides) or against a wall by cutting back the crown molding and using a filler strip. **NOTE: This cut must be performed on-site by a skilled trades professional.**

We customize the vanity top to ensure a perfect fit between the linen tower and vanity cabinet. The linen tower decorative kick is designed to integrate seamlessly with the vanity decorative kick. A 3/4" colour matched filler strip closes the gap and the side splash is also cut down for a custom look.

When purchasing a linen tower, please consult with a sales associate and choose from the linen tower layout options (see pg. 27). We will prepare the linen tower(s) according to your layout, facilitating the installation.

NOTE: Linen towers cannot be integrated with 24" vanities. If integrating linen towers with a 72" vanity, we recommend using two 19 5/8" mirrors. The width of the crown molding on the linen towers will prevent 26" mirrors from being centred over the sinks. When integrating a linen tower and vanity we recommend the installation be performed by a skilled trades professional.



▲ Decorative kick integration



▲ Side splash is pre-cut for Linen Tower integration





HARDWARE

Stonewood offers a wide range of handles and knobs for your vanity. Choose “no hardware” on your order form to customize your look even further.

IMPORTANT HARDWARE NOTE:
Chestnut (Raised Panel) in sizes 30" R & L, 42", 48" and 60" Double Sink are only available with knobs.
Handles do not fit on these models.

BAR



BLACK (96 MM)



BRUSHED NICKEL (96 MM)



CHROME (96 MM)



OIL RUBBED BRONZE (96 MM)

BEVELLED



BLACK (96 MM)



BRUSHED NICKEL (96 MM)



CHROME (96 MM)



OIL RUBBED BRONZE (96 MM)

CURVED



BLACK (96 MM)



BRUSHED NICKEL (96 MM)



CHROME (96 MM)



OIL RUBBED BRONZE (96 MM)

SLIM



BLACK (96 MM)



BRUSHED NICKEL (96 MM)



CHROME (96 MM)



OIL RUBBED BRONZE (96 MM)

WIDE



BLACK (96 MM)



BRUSHED NICKEL (96 MM)



CHROME (96 MM)



OIL RUBBED BRONZE (96 MM)

LONG CURVED HANDLES FOR DRESSER STYLE VANITIES



CLASSIC



BLACK



BRUSHED NICKEL



CHROME



OIL RUBBED BRONZE

MODERN



BLACK



BRUSHED NICKEL



CHROME



OIL RUBBED BRONZE



Hardware can transform your vanity!

Left:
36" Silver (Bellrose) Left Drawer vanity with Pewter Quartz top and Black Curved Handles.

Right:
36" Silver (Bellrose) Left Drawer vanity with Carrera Quartz top and Brushed Nickel Bevelled handles.

STONE VANITY TOPS

Stonewood's Quartz and Granite tops offer a high standard of quality, completing the look of your vanity.

Stonewood Bath Cabinetry strives to give our customers the luxury of choice. This continues with our 1¼" thick stone vanity tops. We offer 16 colour options, two sink styles (available in white or linen) and choice of single, 4" on centre or 8" on centre faucet hole drill patterns. Our vanity tops come with a matching 4" high backsplash. Side splashes are included based on the layout option chosen. For an additional charge, vanity tops can be custom cut. Please consult with a sales associate to help fill out a custom cut vanity top order form.

QUARTZ

Our non-porous, 92% Natural Quartz stone is engineered for consistent colour. It is heat-, scratch- and stain-resistant. No sealing is required, making it maintenance free.

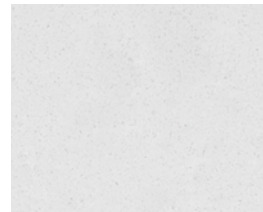
The following stone images are representations of our Quartz. There may be variances in colour and pattern between the pictures, in-store samples and your vanity top.

Standard Quartz top widths:

Our Quartz vanity tops are available in 31½", 37½", 43½", 49½", 55½", 61½" single bowl, 61½" double bowl and 73½" double bowl. See pg. 25 for more detailed dimensions. Custom cuts are available from standard widths.



CARRERA



DOVER WHITE



FANTASY



FROSTY GREY



FUZION



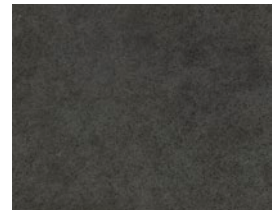
LUNA



MONACO



NIAGARA MIST



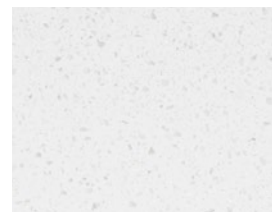
PEWTER



SIENNA



TERRA NOVA



WHITE SAND



GRANITE

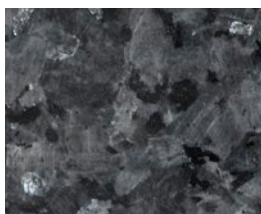
Our Granite is unique in colour, veining and pattern. It is heat-, scratch- and stain-resistant, extremely hard and durable, comes pre-sealed and is low maintenance.

Our Granite vanity tops are reinforced with steel rods for added durability. We seal our Granite using a silicon impregnator which repels liquids and stains. We recommend re-sealing annually.

The following stone images are representations of our Granite vanity tops. Granite is a natural material and therefore every vanity top is unique, with its own characteristics. No two pieces are alike. There may be variances in colour and pattern compared to the pictures shown, in-store samples and your finished vanity top.

Standard Granite top widths:

Our Granite vanity tops are currently available in 31½", 37½", 43½", 49½", 55½", 61½" single bowl and 61½" double bowl. See pg. 25 for more detailed dimensions. Custom cuts are available from standard widths.



BLUE PEARL



GIALLO

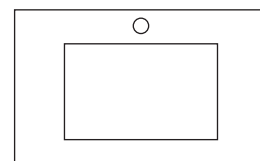


NEW CALEDONIA

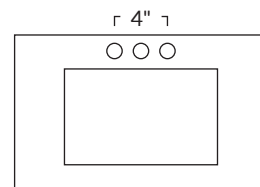


WHITE ROSE

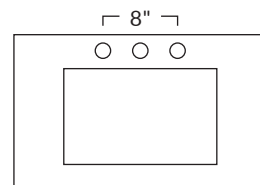
FAUCET HOLE DRILL PATTERN OPTIONS



SINGLE HOLE



4" ON CENTRE



8" ON CENTRE

NOTE: Faucet holes are 1⅜" diameter.

UNDER MOUNT SINKS

by akwa

All vanity tops include undermount sinks that are factory installed using an industrial silicone.

CLASSIC

Distinguished by a deep elongated basin, the Classic sink is a traditional style. The wide-shaped, sweeping sides rest under the counter. Available in White or Linen*.



CLASSIC WHITE



CLASSIC LINEN

MANHATTAN

With unique vertical sides, a low sloping bottom and a centre drain location, the Manhattan sink brings a more modern look to any vanity combination. Available in White or Linen*.



MANHATTAN WHITE



MANHATTAN LINEN

*The colour Linen is comparable to Kohler "Biscuit", Eljer "Silk", Toto "Sedona Beige" and American Standard "Linen".

24" VANITY TOP

NEW!

This white porcelain top comes with an integrated rectangular sink and a sleek, modern profile. It features an overflow drain and non-porous glazing that prevents discolouration and fading. The wide, flat border around the basin provides practical storage.

Only available with single hole faucet drill pattern.

Dimensions: 24¼" x 18½"



NEW!

54" VANITY



The 54" vanity is exclusive to the following Bellrose door style finishes:
White, Five Shades of Grey, Lakewood and Driftwood.

ACCESSORIES

Complete the look of your new bathroom with our mirrors, bath storage cabinets and medicine cabinets. All are available in our entire colour range!



MIRRORS

Complement your new vanity with a matching, wood-framed mirror. All mirrors are 35¼" in height. Available in all colours and various widths.



BATH STORAGE CABINETS

Add a matching bath storage cabinet over your toilet for even more storage. Includes one adjustable interior wooden shelf. Available in all colours.

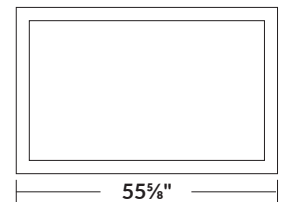
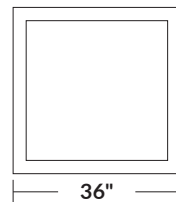
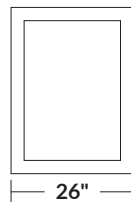
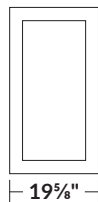


30" MEDICINE CABINETS

30" medicine cabinets come right hinged with two adjustable glass shelves. They are designed to be mounted flush or recessed. To facilitate recessed installation we cut the back of the crown molding.

NOTE: Wall opening requirement for 30" recessed medicine cabinet is 35" x 25½".

AVAILABLE MIRROR WIDTHS





48" MEDICINE CABINETS

48" medicine cabinets are designed to be mounted flush on a wall. They have two finished interior cabinets, each with three adjustable glass shelves.

Add an extra source of light!

48" medicine cabinets are available with three high efficiency, 3W LED flush mount lights for a secondary source of light. The lights are a soft white (3,000 K).

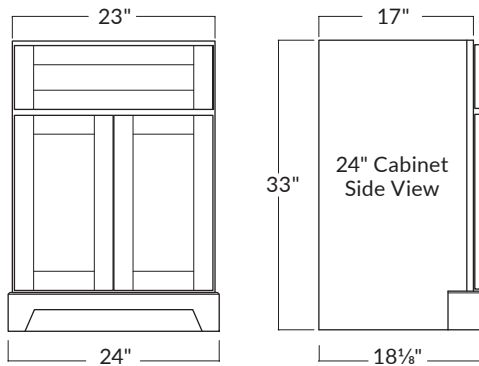
NOTE: 48" medicine cabinets will not fit between two linen towers for E layouts found on pg. 27.

DIMENSIONS

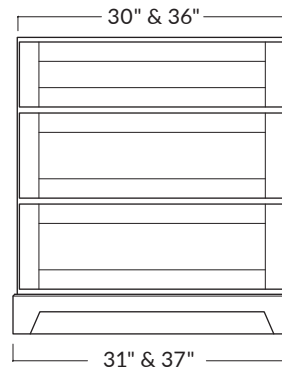
The following measurements are provided to help with the ordering process.
Please allow for 1/8" (+/-) variance.

VANITIES

24" SINGLE SINK

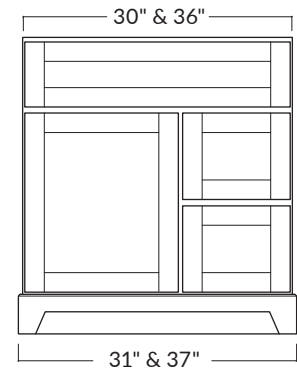


30" OR 36" SINGLE SINK DRESSER STYLE VANITY

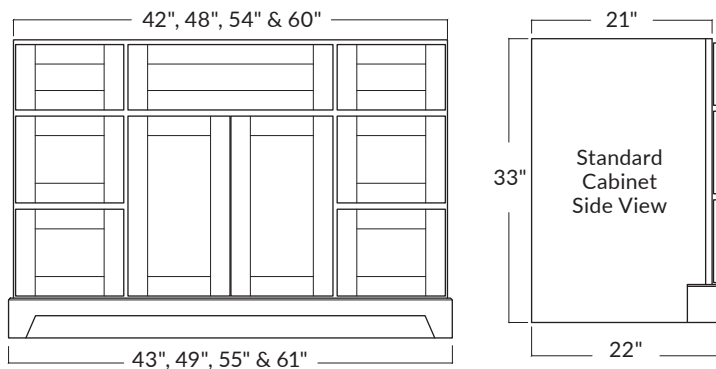


Upper drawer depth is 14" with
6" (w) x 9 1/4" (d) notch in centre to
accommodate plumbing.

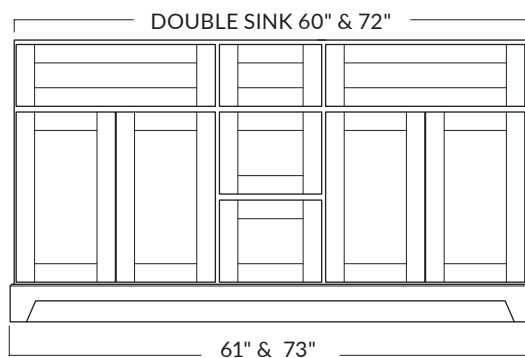
30" OR 36" SINGLE SINK (DRAWERS AVAILABLE ON LEFT OR RIGHT)



42", 48", 54" & 60" SINGLE SINK

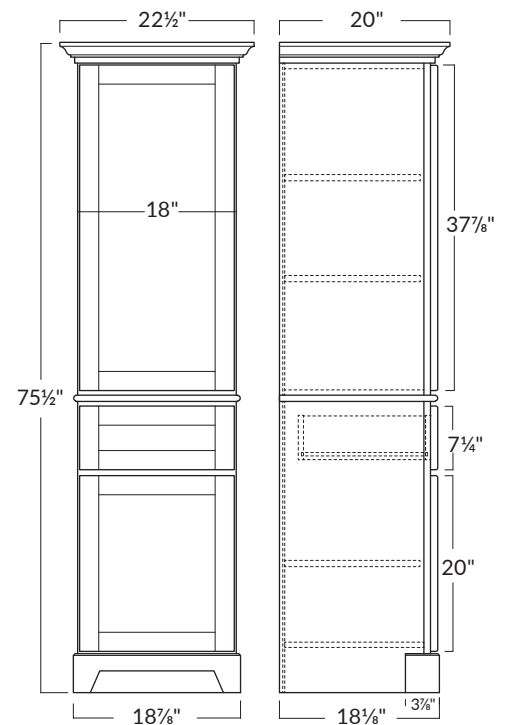


60" OR 72" DOUBLE SINK



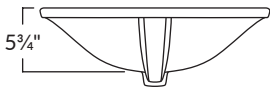
LINEN TOWER

Choose open shelves or an upper door
with right or left hinge.

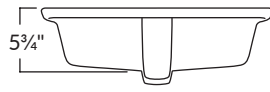


UNDERMOUNT SINKS

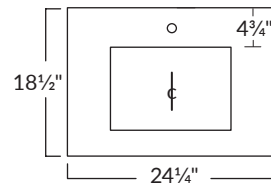
CLASSIC SINK PROFILE



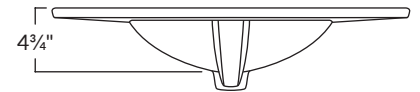
MANHATTAN SINK PROFILE



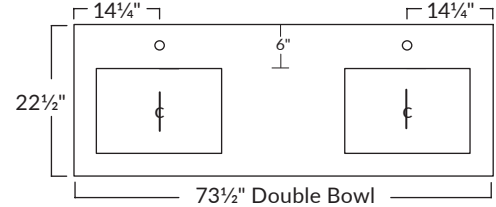
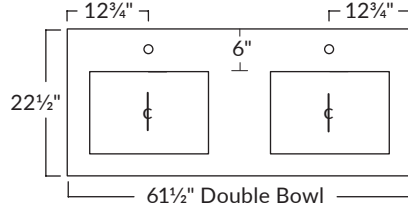
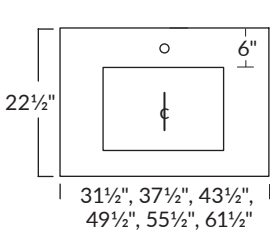
24" PORCELAIN TOP



BASIN PROFILE

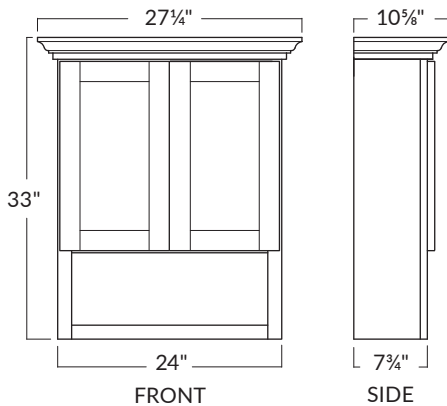


SINK POSITIONING WITH STONE TOPS (Note: The stone top opening for both the Classic and Manhattan Rectangular sink is 17" x 11 5/8")

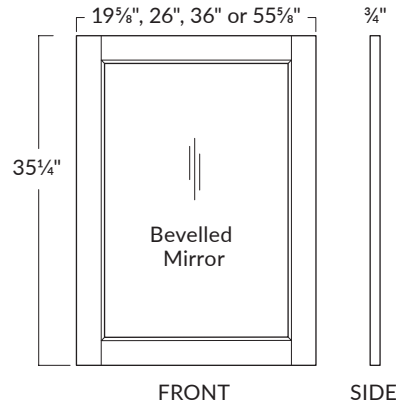


ACCESSORIES

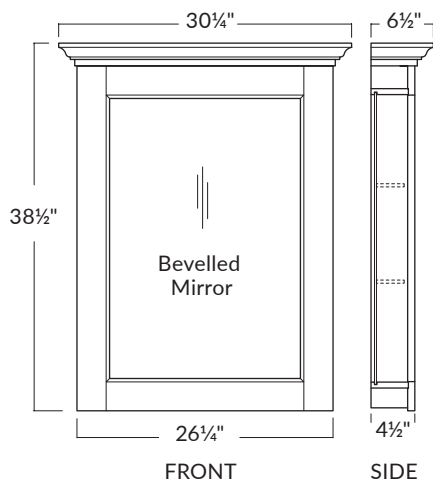
BATH STORAGE CABINET



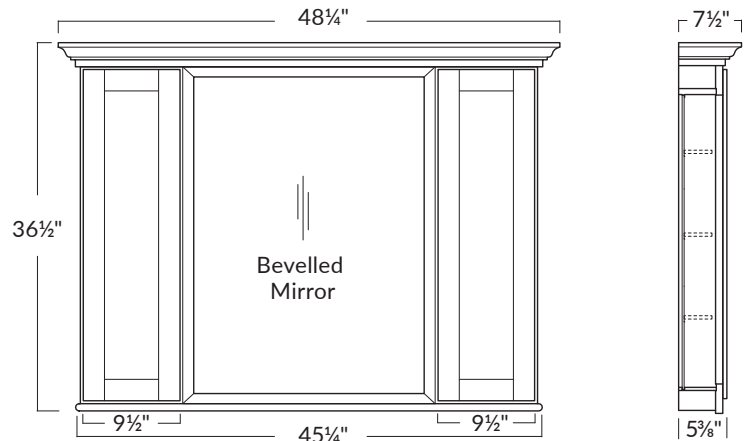
MIRRORS



30" MEDICINE CABINET (FLUSHED OR RECESSED)



48" MEDICINE CABINET



PROJECT PLANNING & INSTALLATION TIPS

We recommend a **skilled trades professional** performs the installation of your new vanity. Please refer to the tips below and our online videos prior to installation.

1. Accurately measure your bathroom. Make note of plumbing locations, electrical outlets, light fixtures and available wall depth at a doorway. **NOTE:** Our Quartz and Granite tops are 22½" deep. If your vanity is going next to the toilet, you should allow a minimum of 15" from the centre of the toilet to the edge of the vanity.
2. Refer to the layout options on pg. 27. Using dimensions from pg. 24 and 25, draw your bathroom to scale. Your dealer is there to assist you with any questions you may have. **NOTE:** The stone vanity tops are 1½" larger than the cabinet. For example a 48" cabinet has a 49½" top, allowing for ¾" per side overhang.
3. Select your cabinet finish, hardware, stone vanity top, faucet drill pattern, sink and accessories.
4. If your cabinet is up against a wall a filler strip can be used for a perfect fit. 1" colour matched filler strips are included with the purchase of your vanity, based on the layout option you choose. 4" colour matched filler strips are available at an additional charge.
5. When integrating a linen tower and vanity we recommend the installation be performed by a skilled trades professional.
6. Your vanity top comes complete with a matching 4" backsplash. Side splashes are included based on the layout option chosen. For an additional charge vanity tops can be custom cut to fit between two walls. Please consult with a sales associate to help you fill out a custom cut vanity top order form.
7. Review and place order with your dealer. Expect delivery within two - three weeks (Five weeks for Five Shades of Grey Premium Collection). Your dealer will have our delivery schedule.

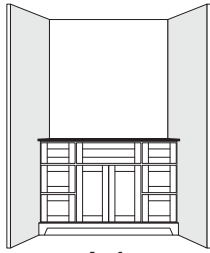


EASY TO FOLLOW INSTALLATION VIDEOS
ARE AVAILABLE ONLINE AT:
stonewoodbath.com/videos

LAYOUT OPTIONS

1

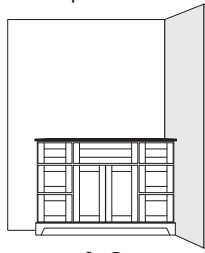
Between
two walls



A-1

2

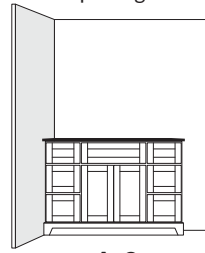
Wall on right,
open left



A-2

3

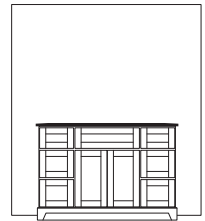
Wall on left,
open right



A-3

4

Free
standing



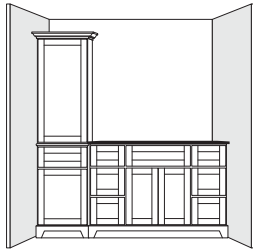
A-4

A

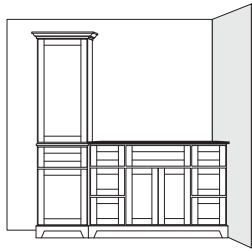
Vanity only

B

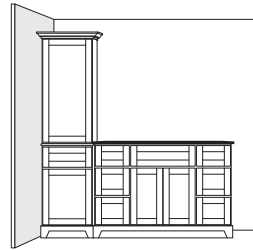
Vanity with
Linen Tower
(left)



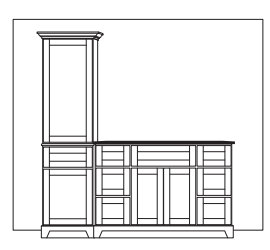
B-1



B-2



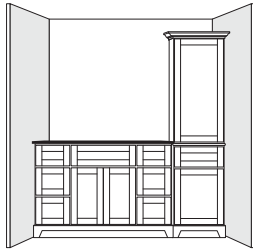
B-3



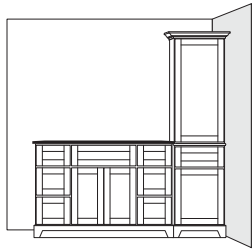
B-4

C

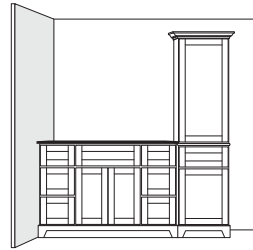
Vanity with
Linen Tower
(right)



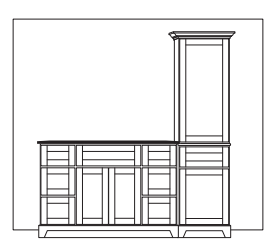
C-1



C-2



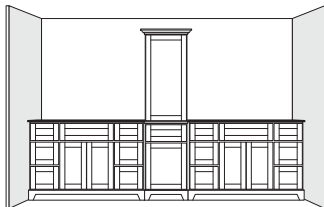
C-3



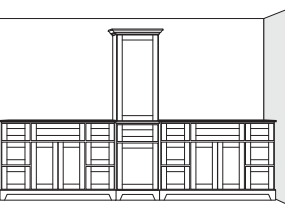
C-4

D

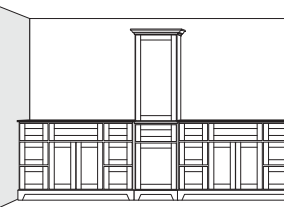
Double Vanity
with
Linen Tower
(centred)



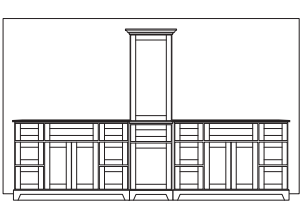
D-1



D-2



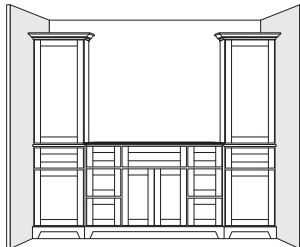
D-3



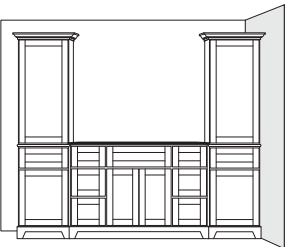
D-4

E

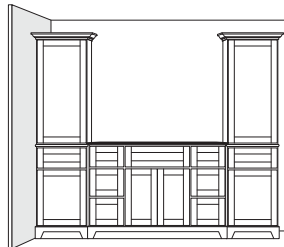
Vanity with
Linen Towers



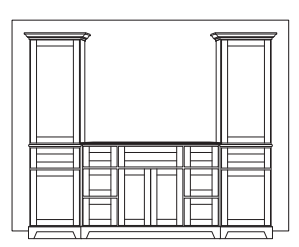
E-1



E-2



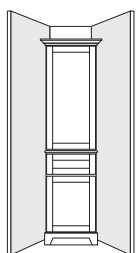
E-3



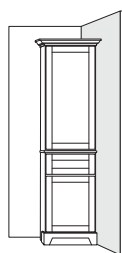
E-4

F

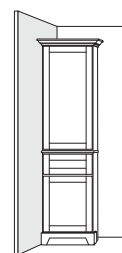
Linen Tower
Only



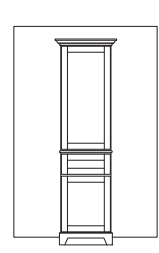
F-1



F-2



F-3

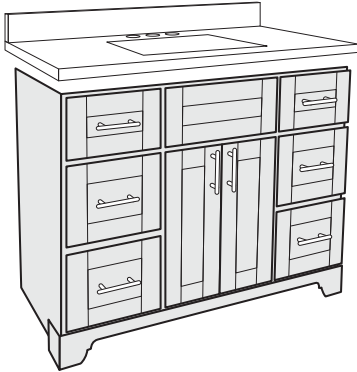


F-4

EASY ORDERING

Follow the steps below to order your new vanity exactly the way you want it.

1. CHOOSE YOUR VANITY SIZE AND FINISH



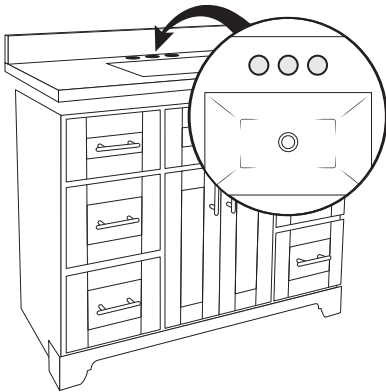
2. CHOOSE YOUR HARDWARE



3. CHOOSE YOUR STONE VANITY TOP



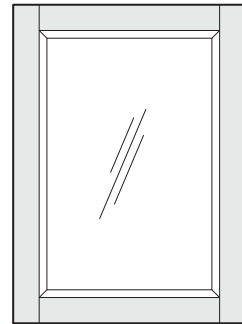
4. CHOOSE YOUR FAUCET DRILL PATTERN



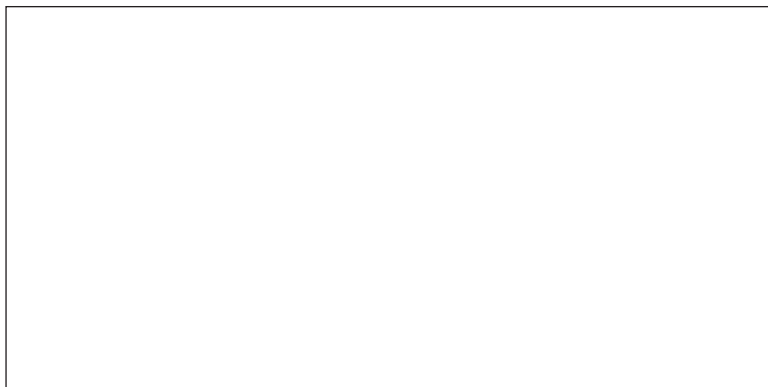
5. CHOOSE YOUR SINK



6. CHOOSE YOUR ACCESSORIES



7. SPEAK TO YOUR SALES ASSOCIATE TO FINALIZE YOUR ORDER.
EXPECT DELIVERY IN TWO - THREE WEEKS. (FIVE WEEKS FOR FIVE SHADES OF GREY.)



STONEWOOD
BATH CABINETS



stonewoodbath.com



Printed on 30% recycled material.
Please recycle.